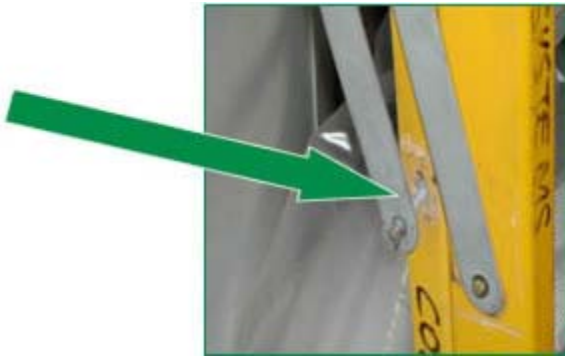


HSE Guidance - Stepladders safety check

Things to look for

Check the locking bars

Do not use the stepladder if locking bars are bent or the fixings are worn or damaged as the ladder could collapse.



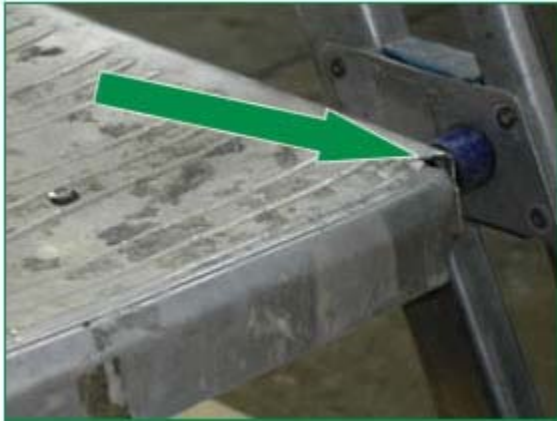
Check the feet

Do not use the stepladder if feet are missing, worn or damaged as the ladder could slip.



Check the stepladder platform

Do not use the stepladder if the platform is split or buckled, the stepladder could become unstable or collapse.



Check the steps/treads

Do not use the stepladder if the steps/treads are contaminated as they could be slippery.

Check the steps for strength and stability

Do not use the stepladder if the fixings are loose as they could collapse.



Check the stiles

Do not use the stepladder if stiles are bent or damaged as the ladder could buckle or collapse.

