

Youth Service Assessment of Need

RAG Briefing

27th September 2019



Regional Assessment of Need 2020-2023

Desktop Research

- Policy Context
- Existing Research
- Reflection of 2017-2020 RAoN/RYDP
- Mapping of Youth Provision and Proximity to services

Stakeholder Engagement

Stakeholder Engagement Events on Key Youth Worker Themes
Consultation with Young people

Survey of Needs

Survey with Children and Young people, Youth Workers & Key Stakeholders



Survey Areas of Inquiry

AREA OF INQUIRY

Health & Well Being

Learn & Achieve

Good Relations

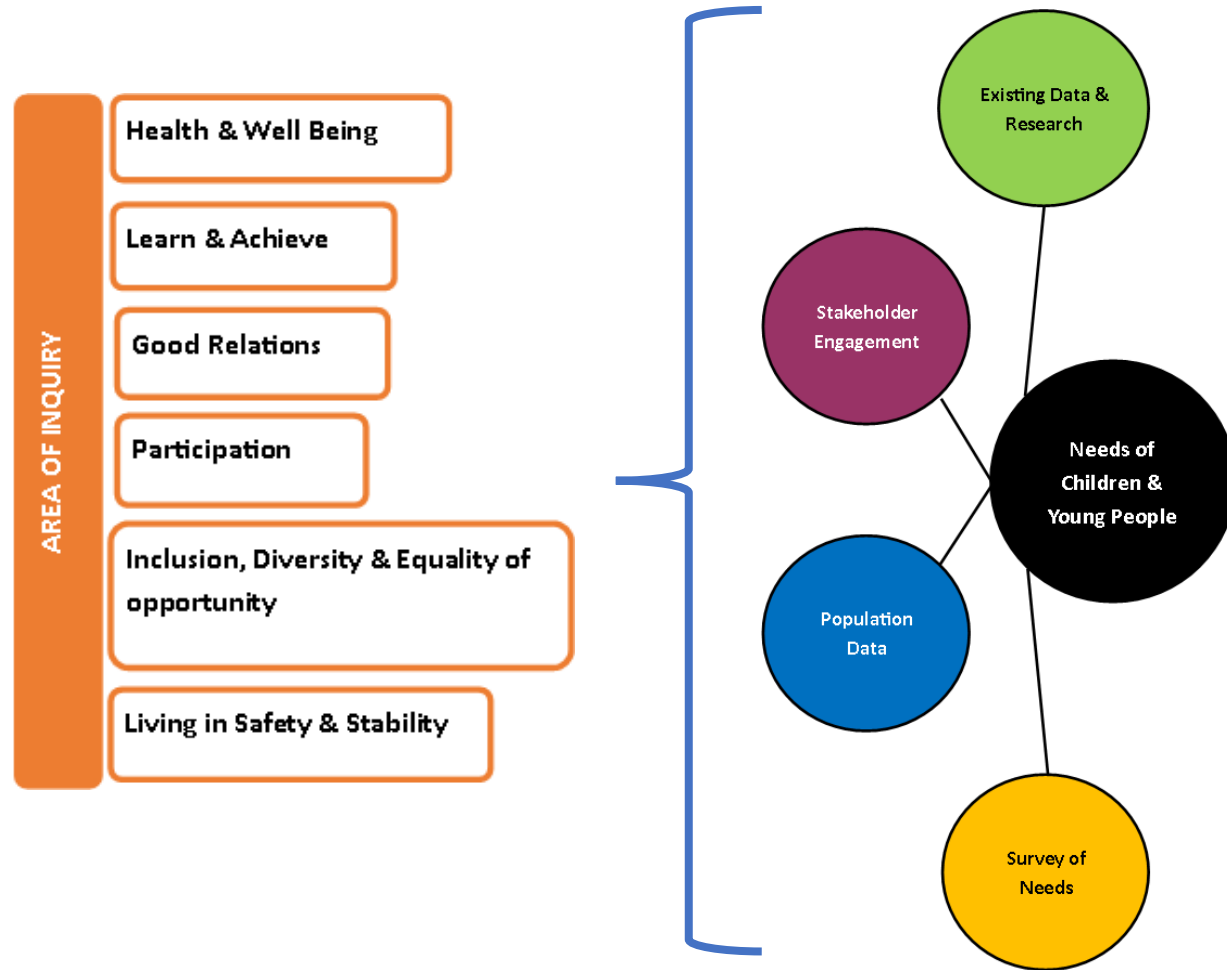
Participation

Inclusion, Diversity & Equality of opportunity

Living in Safety & Stability



RAoN Framework



Expert Insights
Contributions from
sector relevant
professionals



A fresh look at the RAoN Survey

Demographics

- Respondent type
 - Age Band
 - Gender
 - Location
 - Engagement

Assessment of Need

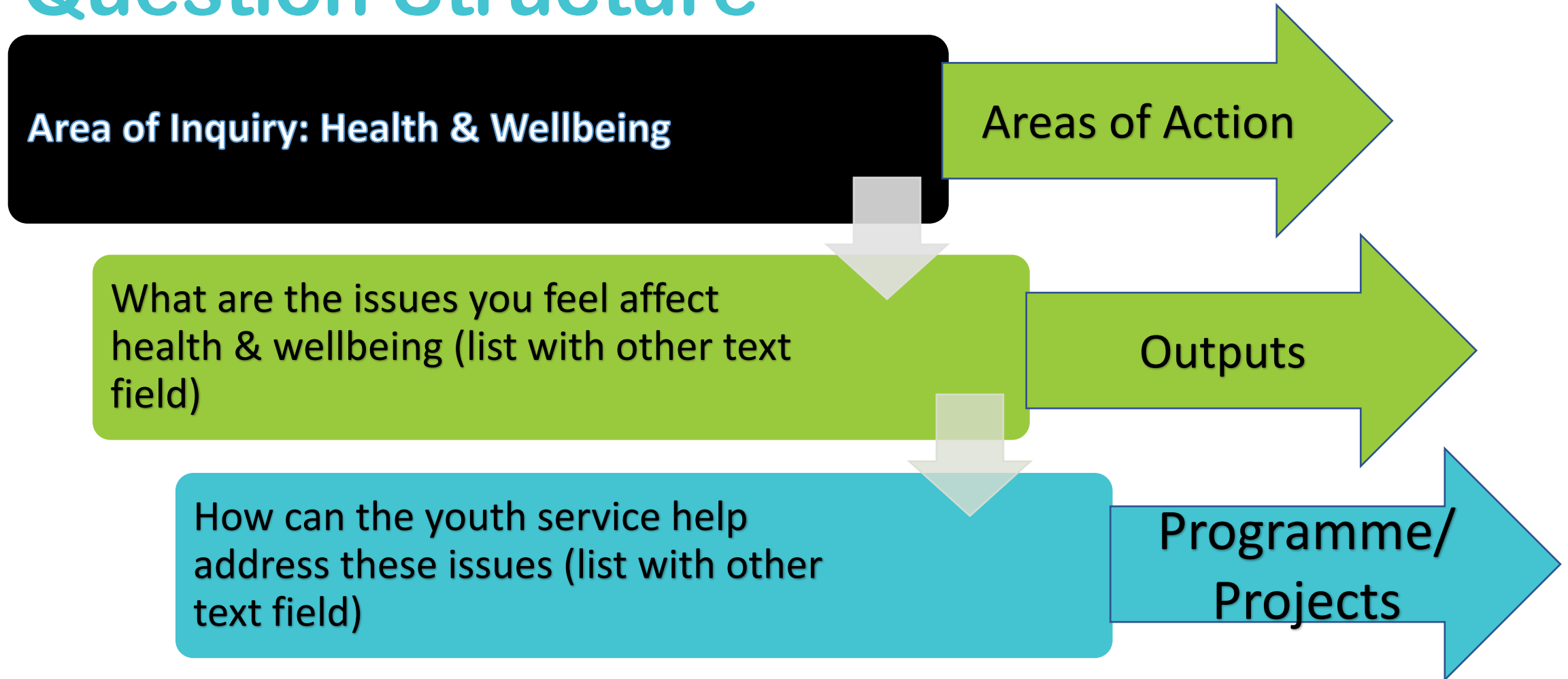
- Area of inquiry focused Questions

Communication

- How/what is the best way to let you know about opportunities/how to get involved




Question Structure



Who

Both Young People & Youth Workers

 Youth Service Regional Assessment of Need (Youth Workers and Volunteers) DRAFT

All About You

* In which sector do you work or volunteer?

Statutory Sector (Education Authority)

Voluntary Sector

* Which of the following best describes you?

Full-time Youth Worker

Part-time Youth Worker

Volunteer Youth Worker


* Which of the following age bands do you predominantly work with?

4-8 Years

9-13 Years

14-18 Years

19+ Years

 Youth Service Regional Assessment of Need DRAFT

All About You!

* Please select your age category.

9-13 14-18 19-25

* Gender

Male Female Other Prefer not to say

* Do you currently participate in Youth Service activities/programmes (for example Boys' Brigade, Guides, Scouts, Youth Work in Schools, Youth Club, Youth Project, Youth Council)?

Yes No

* In which Council area do you live?

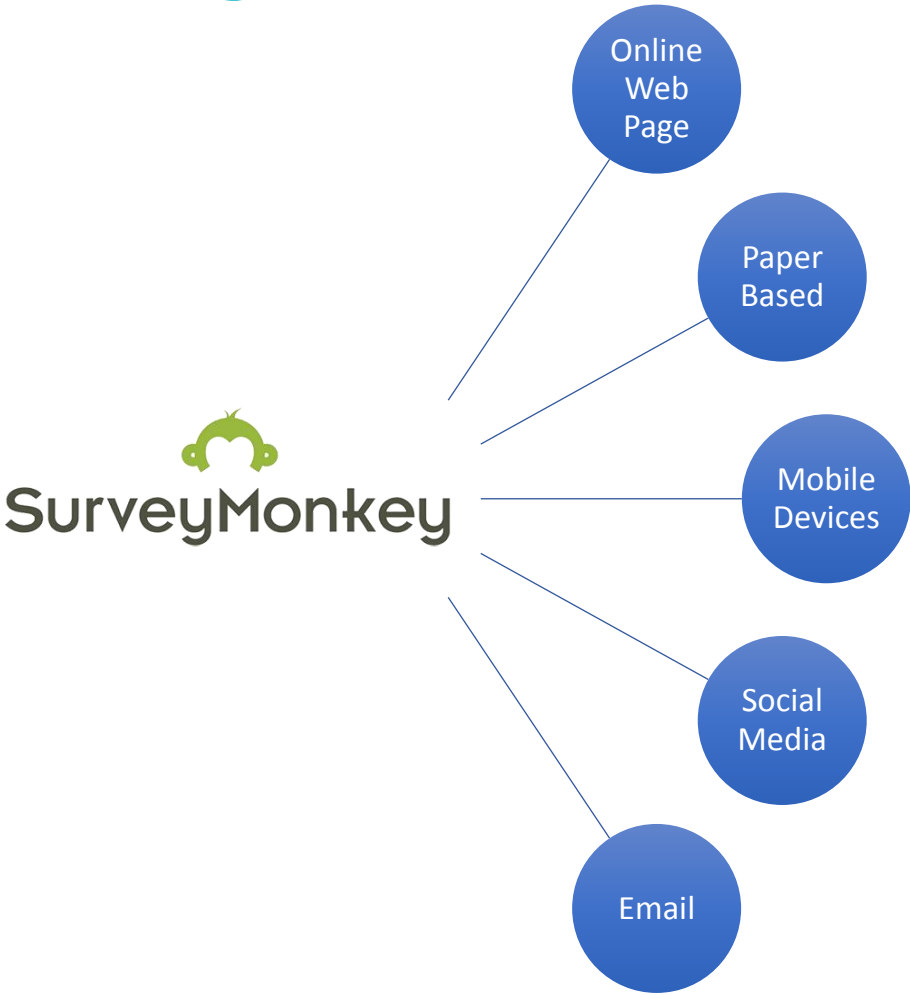
Antrim & Newtownabbey Fermanagh & Omagh

Ards & North Down Lisburn & Castlereagh

Armagh, Banbridge & Craigavon Mid & East Antrim



Delivery of Assessment of Need



Multi-Channel Approach



Improvements

- **Multiple Choice list randomisation**
- **Logic Branching**
- **Singular assessment of need for both regional and local**



Key Dates

- Survey will go live on 30th September (3 weeks)
- Final Draft RAoN for December 2019
- RAoN published in January 2020

